

My Care Record...

Buckinghamshire ICS Vision



Vision

Everyone working together so that the people of Buckinghamshire have happy and healthy lives

Objectives

- › People supported to live independently;
- › Care integrated locally to provide better support closer to home;
 - › Improved urgent and emergency care services;
 - › Improved resilience in primary care services;
 - › Improved survival rates for cancer;
 - › Improved outcomes for people suffering mental illness;
- › Reduced unwarranted variations in quality and efficiency of planned care;
- › Digital transformation implementing IT platforms that support integrated care;
 - › Long term operational and financial sustainability.

Core & Enabling Pillars

Population Health: Working with localities to define and segment populations, understand their needs and monitor outcomes of interventions (including prevention and self-care).

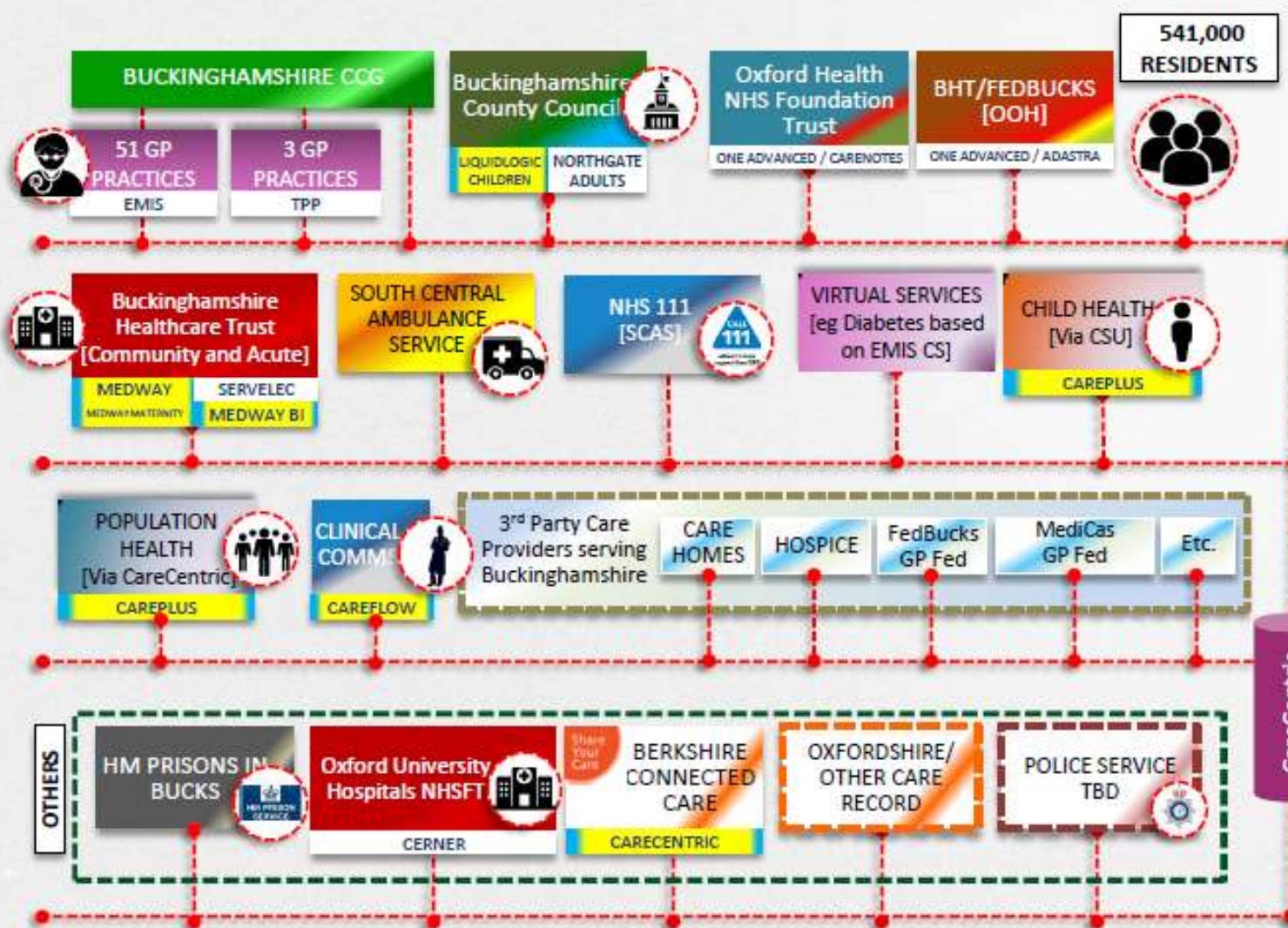
Integrated Care: Improving access to services for people with long-term conditions and frailty in particular. This will support people to live independently and reduce reliance on emergency and acute services.

FYFV: National priorities including improving outcomes for cancer, improving resilience in primary care, improving access to urgent care and improving outcomes for people with mental health.

Professional Support Services (Enablers): that ensure we have the support, expertise and technology to operate as an effective integrated care system.



A Shared Care Record for Buckinghamshire



- 1 Single MPI for the care community
- 2 Detailed health and social care record
- 3 Records available to clinicians in all care settings
- 4 Record embedded into local systems with Single Sign On and patient context
- 5 Mobile access using smartphones and tablets
- 6 SSO to PACS, EDMS and other systems

ALLIANCE APPLICATION



In Use

Results & Requests Summary

Last GP Result Date
Showing 1 of 50 items

Haematology 23-May-2014

Last Acute Result Date

Investigations and Procedures

Showing 1 - 6 of 30 items

Therapeutic Procedure
Change of dressing... 13-Jul-2014

Therapeutic Procedure
Anticoagulation declined

Imaging
Standard Back X-ray

GP Results

Date	Test Name	Value	Unit
20-3-2015	Glucose/HbA1C	8.5	mmol/L
18-3-2015	Glucose/HbA1C	8.9	mmol/L
18-3-2015	Glucose/HbA1C	9.1	mmol/L
18-3-2015	Glucose/HbA1C	10.0	mmol/L

Hospital Results

Mental Health Summary

Social Care Summary

GP Results

Hospital Results

Mental Health Summary

Social Care Summary

2
Group data from **different care settings** ... here data from GPs, Laboratories, Mental Health, and Social Care ...

1
Group several information sources **onto the same screen** to suit the user – here MPI details, recent tests, allergies, medications, problems, health status, and more ...

3
Access the data on the **most convenient device**

TABLET MOBILE DESKTOP



CareFlow (what it does) – Licensed across ICS



Online Care Teams



Integrated Secure Messaging



Real Time Patient Event Notifications

Digital Workflow



1 By enabling virtual teams via social technology, Careflow provides a better way to get the right information to the right person at the right time.

2 Careflow provides a highly scalable publish-subscribe platform to deliver data to care teams in real time using Open APIs. Pushed to mobile devices, Careflow tracks receipt and allows instant responses

3 Careflow integrates with PAS or EPR to enable mobile, secure, team-based communication centred around the patient record. It keeps the team updated in real time.

4 Careflow enables additional team-based workflow such as shared patient 'smart' lists, patient handover and specialist team referrals

Care should be personalised ...

